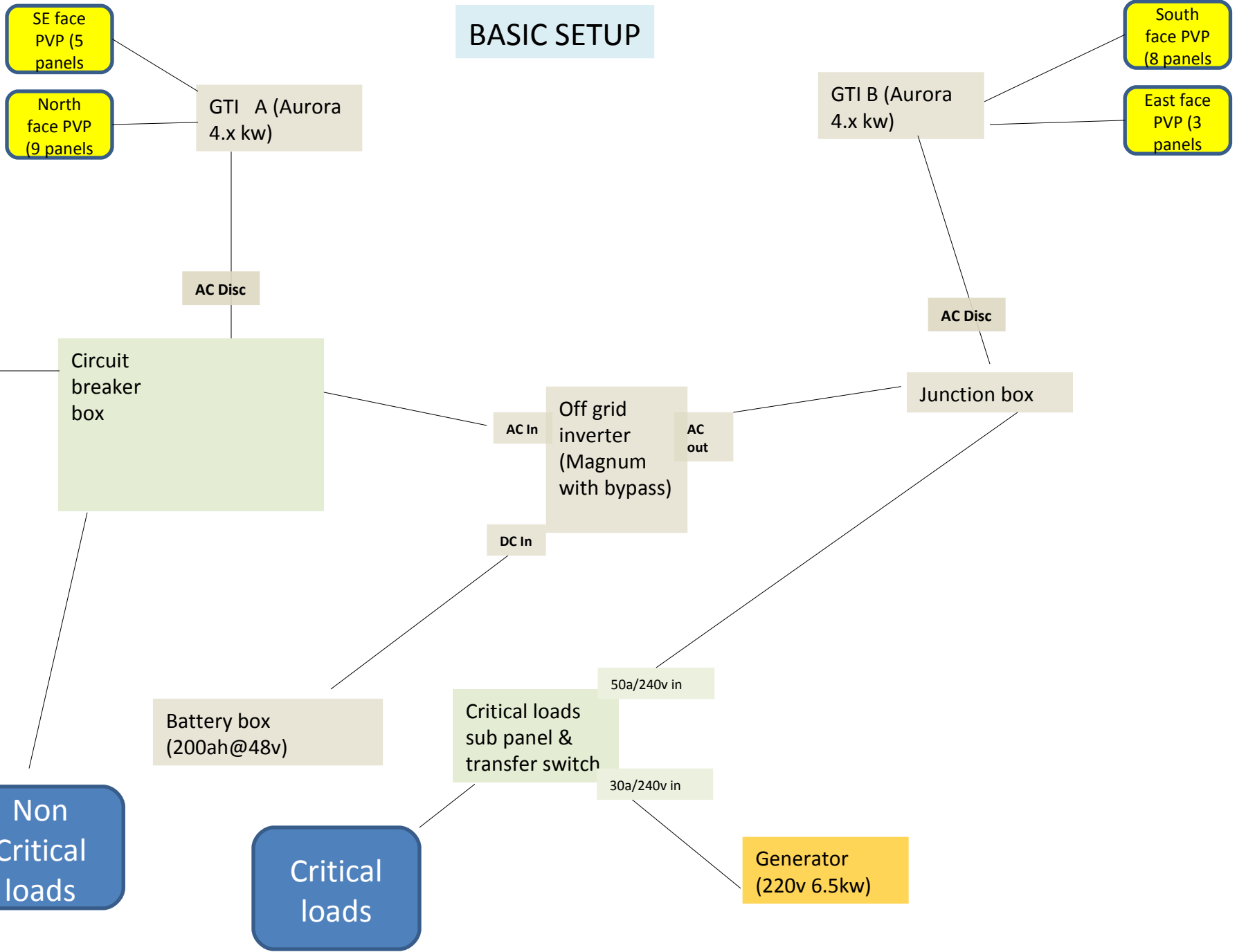
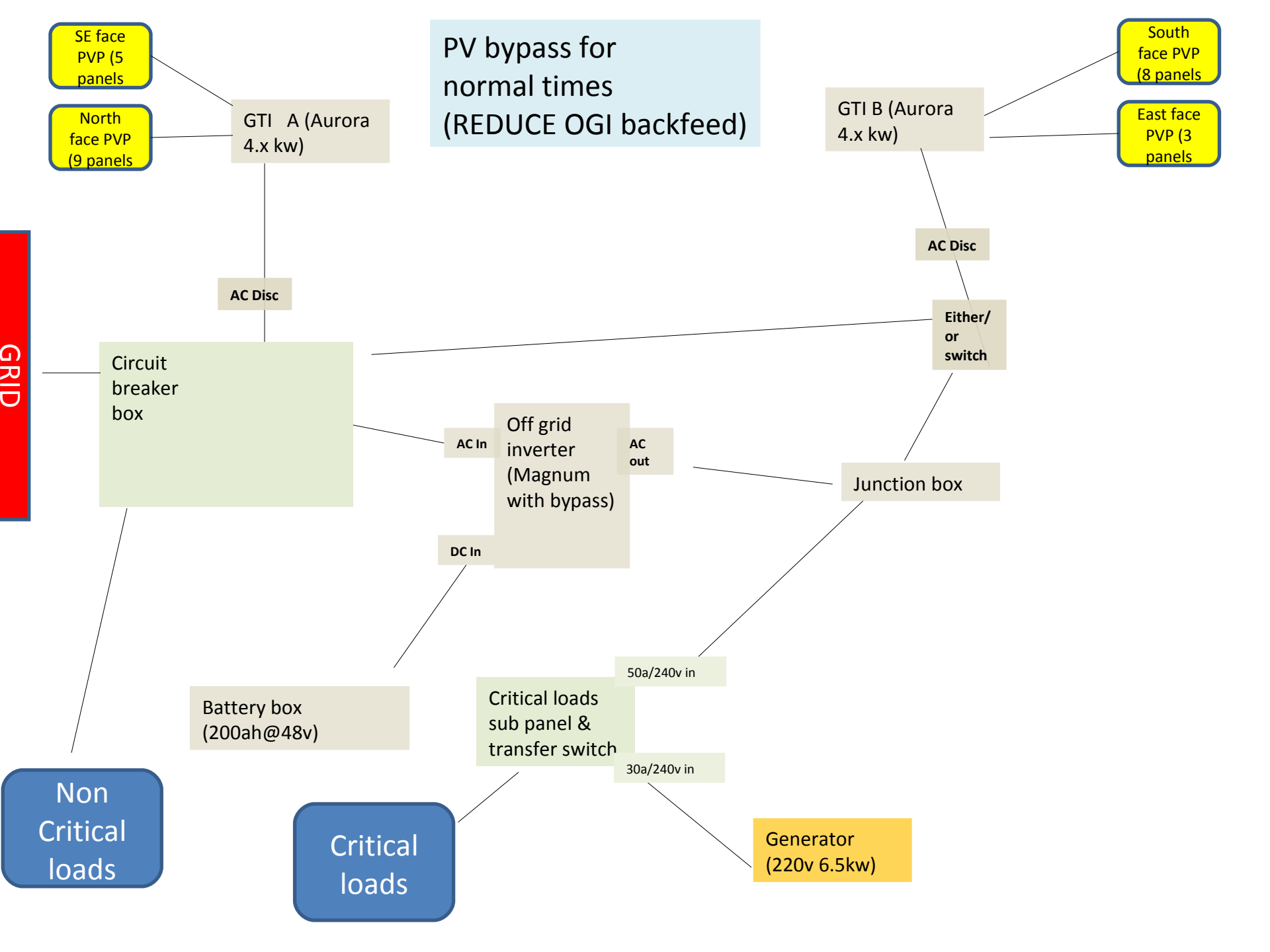
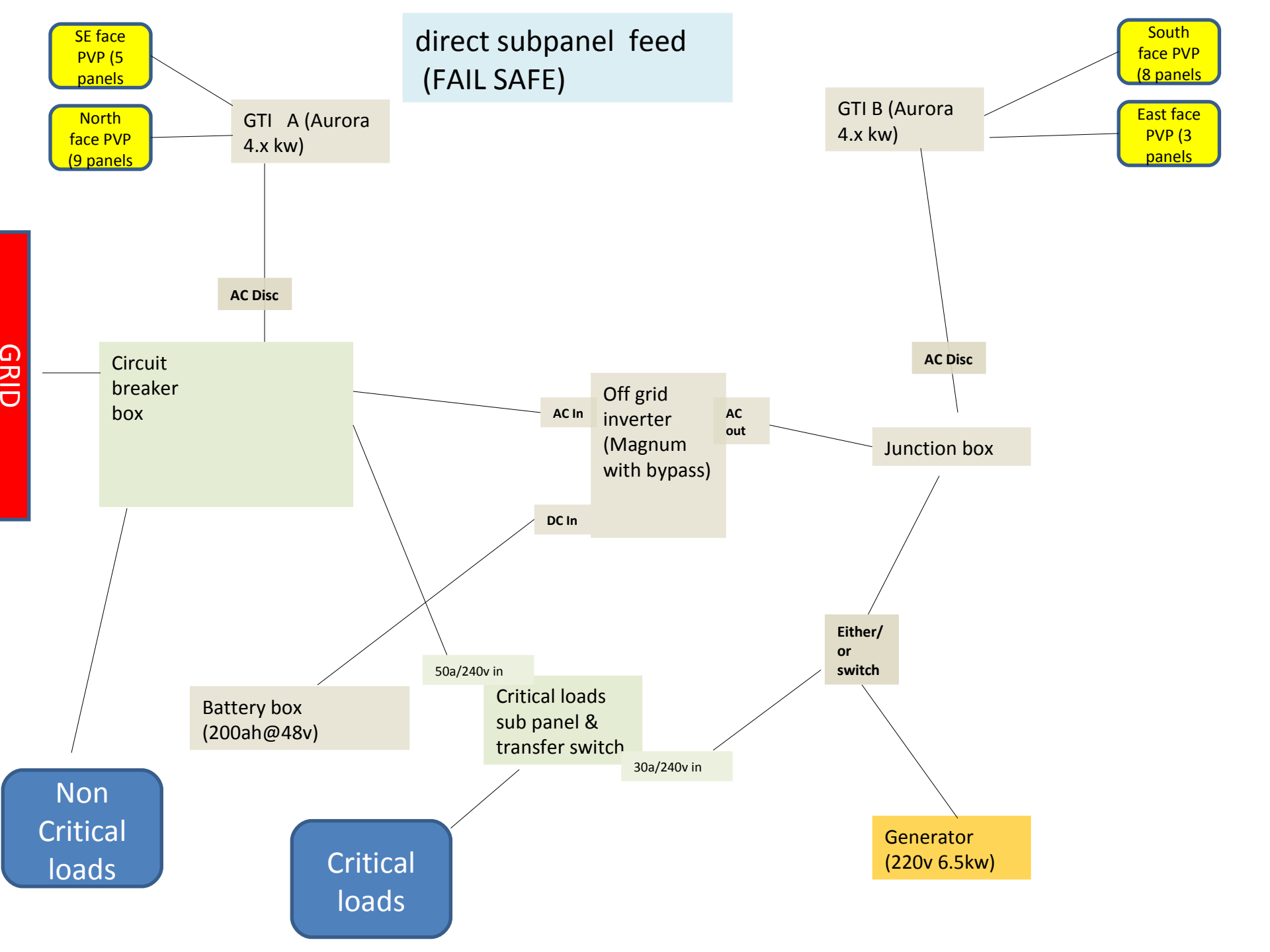


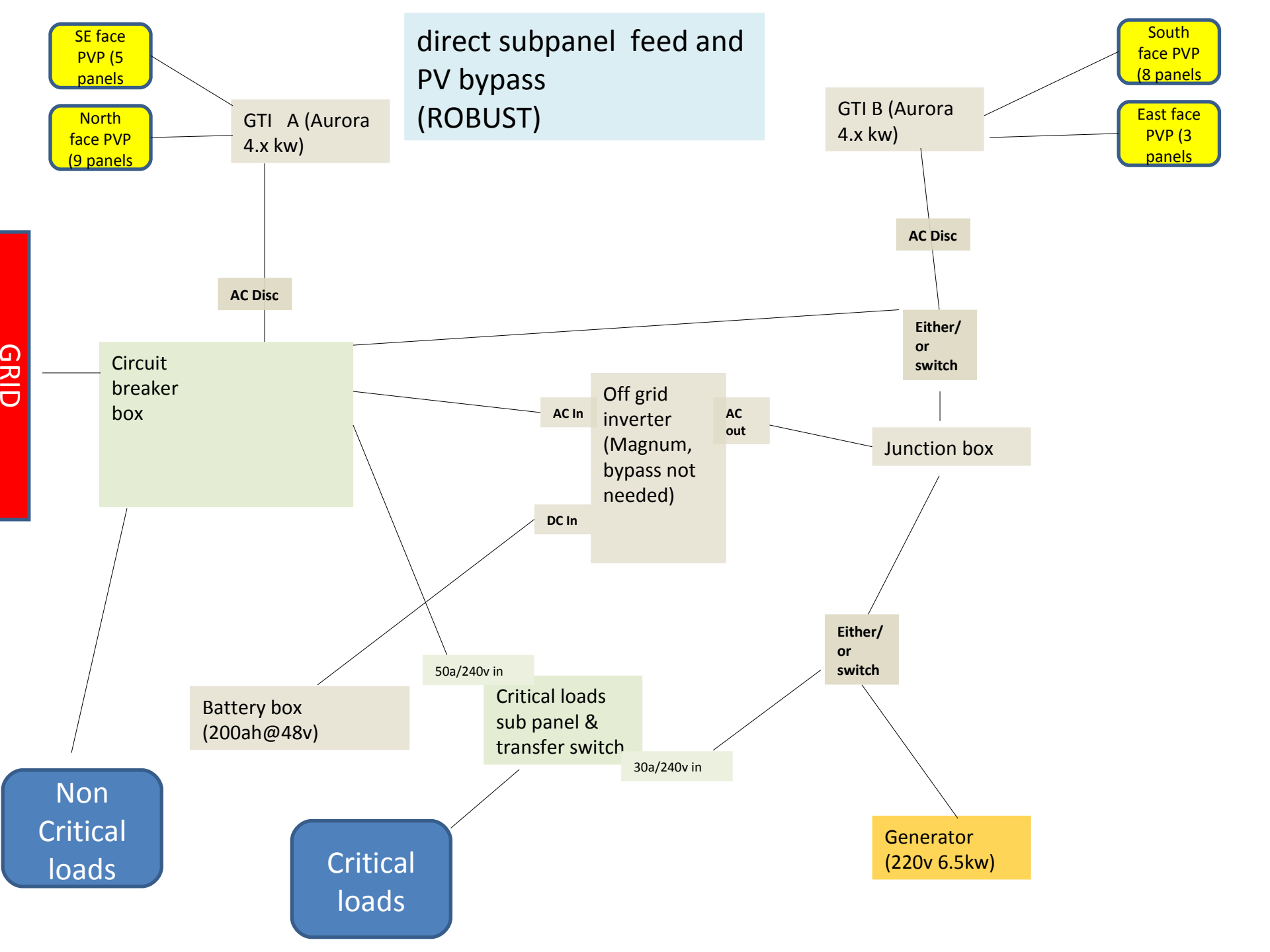
BASIC SETUP

GRID









direct subpanel feed and PV bypass (ROBUST)

SE face PVP (5 panels)

North face PVP (9 panels)

GTI A (Aurora 4.x kw)

South face PVP (8 panels)

East face PVP (3 panels)

GTI B (Aurora 4.x kw)

AC Disc

AC Disc

GRID

Circuit breaker box

Either/or switch

AC In

Off grid inverter (Magnum, bypass not needed)

AC out

Junction box

DC In

Either/or switch

Battery box (200ah@48v)

50a/240v in

Critical loads sub panel & transfer switch

30a/240v in

Non Critical loads

Critical loads

Generator (220v 6.5kw)